

2 CAMP 2 PURSUIT

WWW.NUMINDSENRIICHMENT.COM/KILLEEN

ignite passion

Experience unique and
personalized
STEAM activities!

WEEK 1

June 9-12

WEEK 2

June 23-26

Incoming identified GT 1st - 6th
graders

cost & registration

Fully funded by
Killeen ISD

*students may attend ONE
week

Includes daily
inspirational messages
and mind-body
challenges.

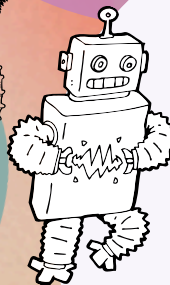
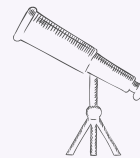
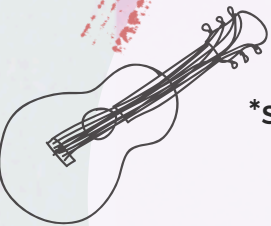
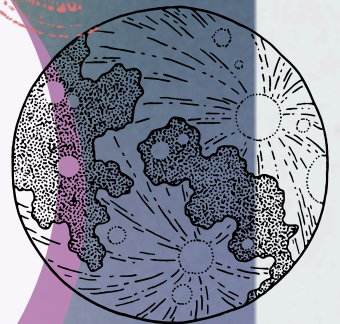
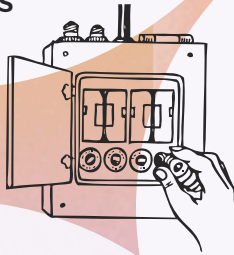
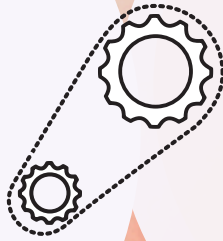
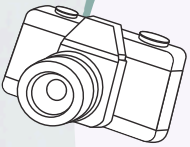
hands-on experience

Engaging STEAM
activities and
hands-on projects
every week!

spark creativity

Inquiry-based
instruction and
activities to promote
critical and creative
thinking

Lessons,
coaching and
feedback from
NuMinds
Inspirators!



Register by May 18th - SPACE IS LIMITED
www.NUMINDSENRIICHMENT.com/killeen

CHOOSE YOUR FAVORITE

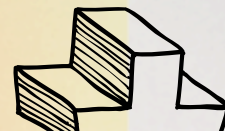
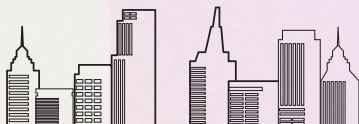
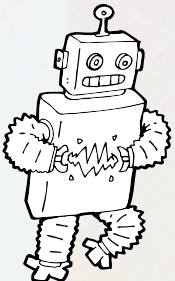
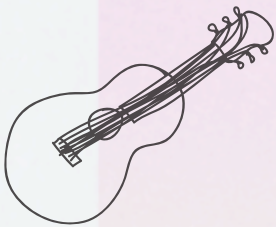
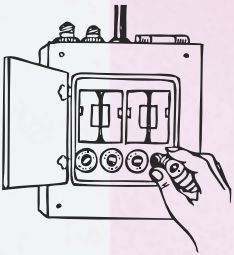
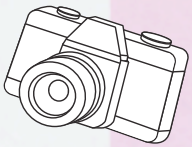
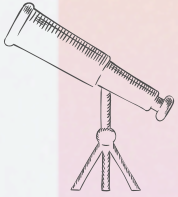
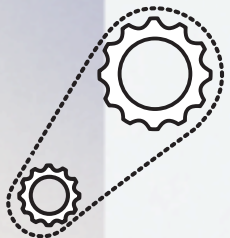
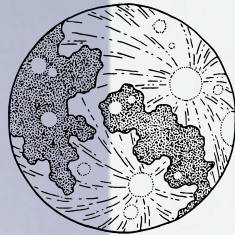


BEE A BEE!

There's been a lot of buzz about bees these days! From using A.I. to understand their language (Beenglish?) and calculating bees' impact on the world's crops, the study of bees has really been taking off. But how can we interact with and engineer a better co-existence with bees? In this course, we'll explore the macroscopic, compound world of bees to better know our fuzzy flying friends, understand their impact on our environment, and create inventive solutions to the sticky situations facing our bees.

GNOME PATROL

Headquarters is receiving a distress call through the fungal network: A tree in your neighborhood needs help. This is a job for the Gnome Patrol, so grab your pointy hat and get going! Tolkein and Collier meet CSI in this fun, hands-on course where tree DNA, leaf print analysis, and pH readings help solve the crime and protect the forest. By the year 2050, over 66% of the world's population will live in cities; but this doesn't mean we can't co-exist with nature. This course addresses how we cohabit our world with a special focus on trees. Instead of calling the course "The Magic of Trees," we decided to take the lens of a group of gnomes, legendary protectors of the forest, and explore how they would help support the development of trees within a city.



Register by May 18th - SPACE IS LIMITED
www.NUMINDSENRICHMENT.com/killeen

²CAMP ⁵PURSUIT

CHOOSE YOUR FAVORITE

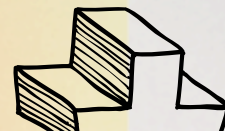
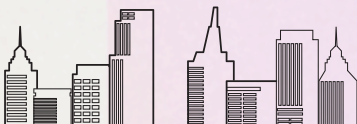
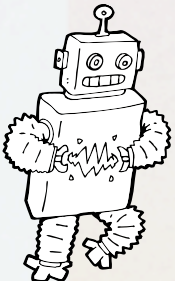
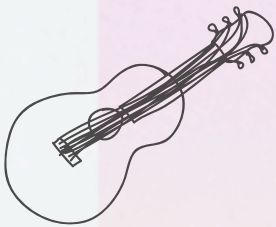
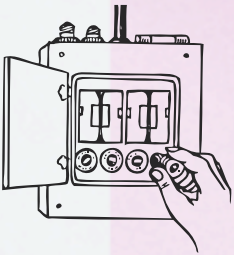
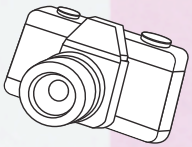
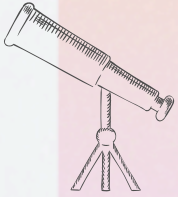
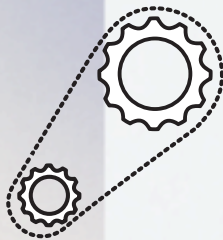
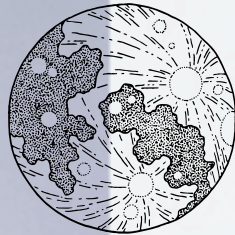


BUILDING WITH THE ANCIENTS

The pyramids align to magnetic north, with stones so tight you can't get a sheet of paper between them. Roman aqueducts carry water for miles, slowly sloping from lake to valve. A ball rolling across tightly wound strings led to the trajectory of cannonballs that made city walls obsolete. Wha...!? How did humans solve these mathematical quandaries? In this course we'll replicate the techniques of the ancients and construct our designs from antiquity.

EPIC FAIL: FIXING HISTORY'S FLUKES

You may have heard that Thomas Edison failed at the light bulb 10,000 times before getting it right, but what about armies attacking the wrong country, blue ketchup, the Leaning Tower of Pisa, or yogurt shampoo? There are Titanics, Hindenburgs and SO MANY mistakes made along the march of human progress. Campers will laugh, recreate, and reimagine many of humanity's slip ups as they ask, "What can we learn from those who boldly face-palmed before us?"



Register by May 18th - SPACE IS LIMITED
www.NUMINDSENRIICHMENT.com/killeen

²CAMP ⁵PURSUIT

CHOOSE YOUR FAVORITE

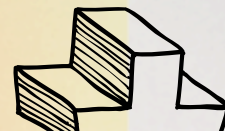
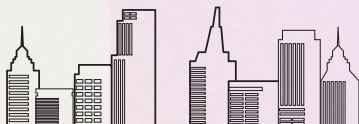
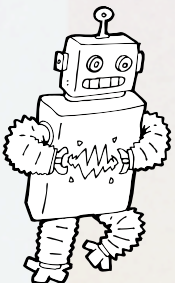
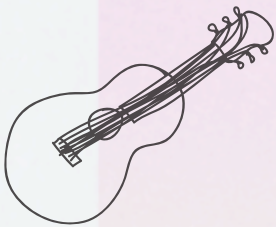
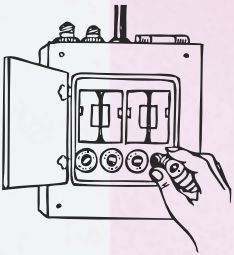
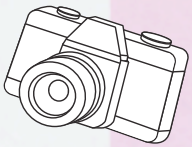
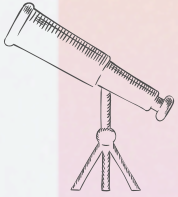
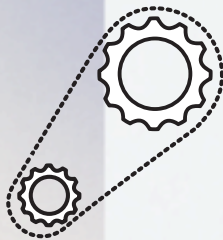
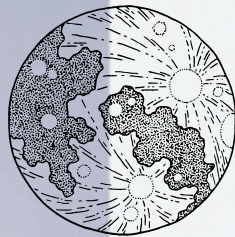


DEEP WORLDS: MARINE BIOLOGY

The largest animal on planet Earth bellows across five hundred miles. Its call covers elusive pyrosomes, glass squids, bottlenose dolphins and underwater crop circles of love-struck pufferfish. According to the scientists at NOAA, we have explored less than 5% of our ocean. The purpose of this course is to explore the expanses of the deep by learning and applying the scientific principles of marine biology.

ENDANGERED ART

Elephants, and tigers, and gorillas, oh my! Some of our most loved animals on the planet are also endangered. Get to know some of the animals on the endangered species list by examining their unique characteristics and habitat needs through a variety of art activities in a range of media. campers will become more familiar with some of their favorite animals and discover some new ones they may not have heard of before. In this course, we'll explore the beauty and art of these animals while raising awareness for the need for their conservation.



Register by May 18th - SPACE IS LIMITED
www.NUMINDSENRICHMENT.com/killeen

CHOOSE YOUR FAVORITE



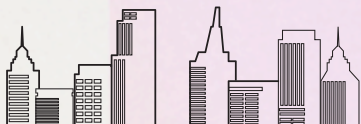
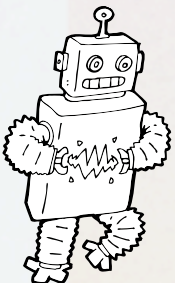
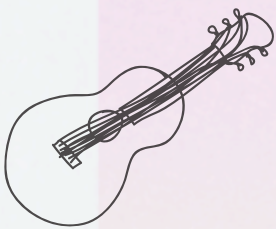
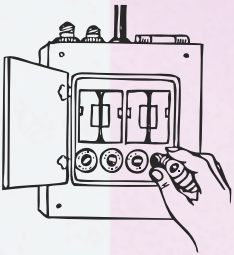
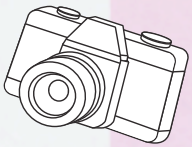
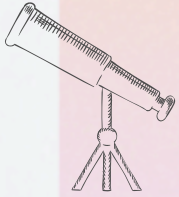
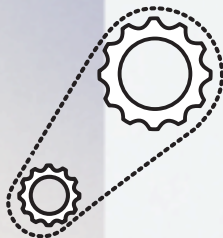
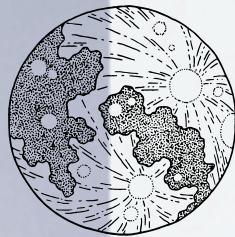
DESIGNING TINY HOMES

Blueprints and AutoCAD set the stage for modular furniture as campers attempt to create a habitable home on wheels. Whether for fun, philanthropy, or reducing your carbon footprint, campers apply design principles in order to cram the comforts of home onto the bed of a towable trailer. This course is about the balance of form with function, wants with necessities, and clutter with feng shui. Bed, bookshelf, table, cabinet, and staircase all-in-one, anyone?

RUBE GOLDBERG'S WORKSHOP

You tip the domino, starting a chain reaction that causes the lever to move the pulley that then open a secret hatch in Mr. Goldberg's Workshop. Crawl inside, into a new room teeming with carefully balanced beams, hoops, and loops of string tied to pivots and fulcrums.

In this course, the practical application of engineering meets the inventive absurdity of Rube Goldberg himself. Students will use creative problem-solving techniques and embrace the Engineering Design Process in order to design, create, and test a variety of their own machines.



Register by May 18th - SPACE IS LIMITED
www.NUMINDSENRICHMENT.com/killeen

²₅CAMP PURSUIT

CHOOSE YOUR FAVORITE

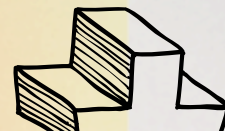
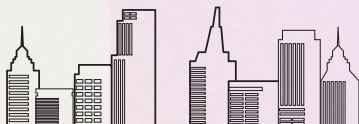
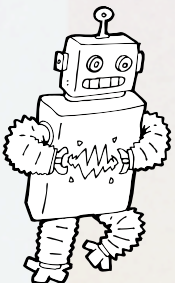
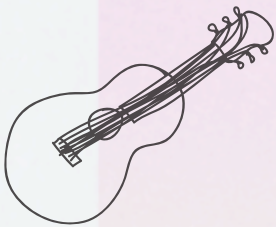
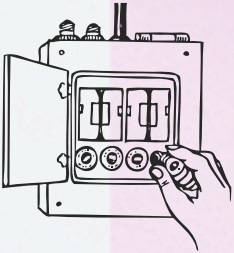
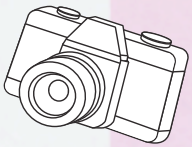
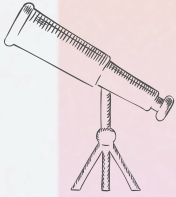
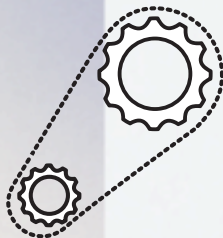
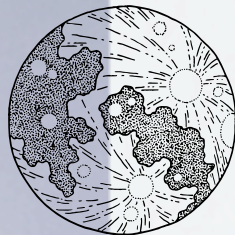


SO MANY FLAVORS OF PI

Welcome to the Great Mathematical Cooking Show! We know that math can be delicious, such as the use of measurements and fractions when you cook, but what is the exact flavor of Fibonacci Nacho Takis? Was your pie sprinkled with pi, or was your pizza sliced with phi? This is math. This is a cooking challenge. This is mathematical madness presented in a unique and unforeseen way.

VENUS FRY TRAP

Welcome to Venus! In this course, students use the backdrop of Venus aerial farming to learn about nutrition, flavor profiles, and the math behind the food industry. Beginning students create a balanced meal that meets MyPlate.gov guidelines, while advanced students will manage profit margins to operate a successful Venetian restaurant.



Register by May 18th - SPACE IS LIMITED
www.NUMINDSENRICHMENT.com/killeen